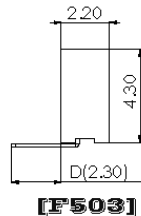
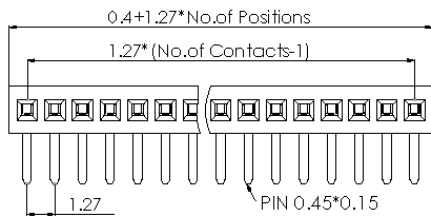
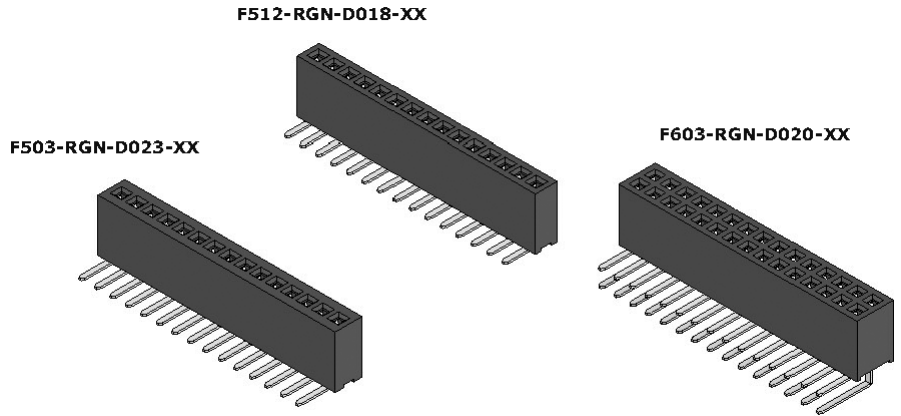


## Female Header 1.27 mm

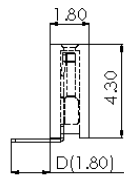
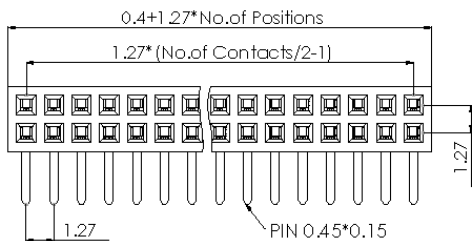
90° Series

### SPECIFICATIONS

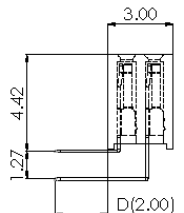
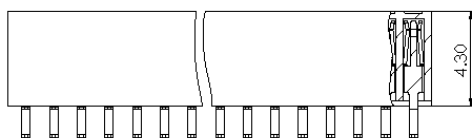
Current Rating: 1 A  
 Insulator Resistance: 1000 MOhm min.  
 Contact Resistance: 20 mOhm max.  
 Dielectric Withstanding: AC 500 V  
 Operating Temperature: -40°C ~ +105°C  
 Soldering Temperature: 260°C for 3~5 sec. max  
 Contact Material: Phosphor Bronze  
 Insulator Material: Polyester, UL 94V-0  
 Standard: Nylon-6T  
 Finish: Tin, Gold or Duplex Plated  
 Standard: Gold Flash all over  
 Note: Duplex Plating: Gold Plated on contact area, Tin on solder area



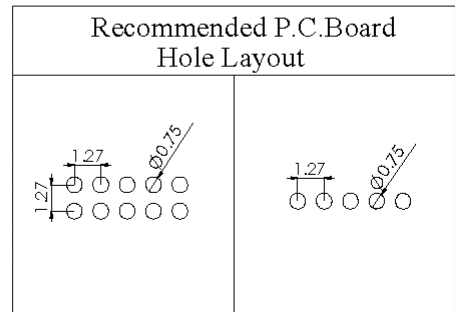
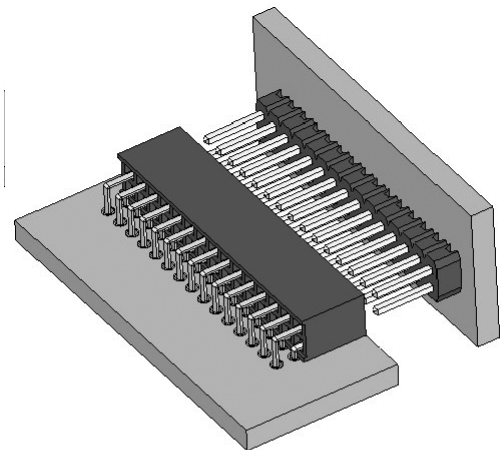
[F503]



[F512]



[F603]



### How to order

Unit: mm

Series	Connector Type	Contact Plating	Material	Pin Length mm	Number of Contacts
<b>FXXX</b>	<b>- X</b>	<b>X</b>	<b>X</b> -	<b>DXXX</b> -	<b>XX</b>
F503:F/H 1.27 H:4.30 Single Row F512:F/H 1.27 H:4.30 Single Row F603:F/H 1.27 H:4.30 Dual Row	R:Right Angle	G:Gold Flash T: Tin Plated A: 10U"Gold B: 15U"Gold C: 20U"Gold ⊙ Duplex Plating D: Gold Flash/Tin (Standard: G)	N: Nylon-6T (Standard: N)	R-D D018 D020 D023	F503, F512 (02 TO 40Contacts) F603:(04 TO 80Contacts)